

OPERAOPUS

BUSINESS IT SOLUTIONS



SVAM PLUS



About us

Information Engineering and Application of Information Technology to Support Business Processes

The company SVAM plus Ltd. is founded in Zagreb in 1995. From the very beginning, we are exclusively engaged in Information engineering and application of IT support for business processes.

OperaOpus™

In 1997 we released the first version of our own ERP system OperaOpus™. Functionally and technologically in continuity we improved the system and recorded a steady increase in revenue, number of employees and users. We are especially proud of the long-term partnership with all our users.

We employ highly educated experts to work in our three departments: Development, Implementation and Maintenance. We use Microsoft tools and databases, for many years being a Microsoft Certified Partner.

On The Product: OperaOpus™

Modules are all assembled and interconnected. During implementation, the entire system adapts to the needs and business processes of the user. Upon completion of the implementation process, the continuous actualization and maintenance of the system guarantee its long-term successful operation.



The main characteristics of the OperaOpus™ system:

- an extensive and complex system of great features with a simple modern interface, a short time of user customization and a built-in context-sensitive help system
- systematically applied principle of full integration and consistency of data, all the data entry at a single place, with no need for subsequent adjustments of business records
- maximum system flexibility in defining documents, processes and reports, an unlimited number of user-defined functions and reports, reporting through several years of business, possibility to download data from previous systems, reports in graphical and pivot form, depth analysis ("drill-down") and prints of documents per customer requirement in multiple languages and variants
- automated and repeatable data entry to finance by flexibly defined variable formulas, a unique-on-the-market fully supported foreign currency accounting, reporting in the original and reference currency
- all parts of the business covered (finance and accounts, accounting, book-keeping of assets, inventory, financial and commercial operations, management accounting, retail, payroll, project management, servicing, registry book, production ...)
- sequentially generated documents by simply copying
- possibility to implement various non-standard and off-balance sheet records in the system
- accurately developed module to monitor the production with scheduling and automatic calculation of real production prices; MRP
- CRM entirely integrated in the system, monitoring of all marketing, sales, purchase, servicing, maintenance activities and the internal organization of business
- billing - integrated system for automatic generating, printing and transparent monitoring of a large number of invoices, letters, interests...
- access to application defined by security settings with tracking history of all transactions in the system by operators
- access by the Internet to all functionalities of the system from any location (separate retail and wholesale outlets, remote management, field sales representatives, dislocated branch offices and plants ...)
- special application for on-line preparation of inventory and other storage of documents using portable terminals with bar code reader
- applications and databases designed according to the principles of modern client-server technology
- integration with Microsoft Office family of applications (Word, Excel, Outlook)
- possibility of joining the files (text, images, contracts, spreadsheets, technical drawings and specifications, certificates...) of any type with all kinds of code books and documents
- use of all available Internet services to automate business (e-banking, e-invoices, exchange rates, Intrastat, electronic submission of forms (VAT, JOPPD...))
- possibility of data exchange with other business systems through XML or other formats (EDI)
- web shop/portal fully integrated and managed by the ERP
- workflow to approve all document of the system
- advanced planning and monitoring of revenues and project costs in accordance with the WBS
- simple expandability of the system provides support to growing needs of the company and the volume of business, as well as to the change of processes within the company
- organization of data and business processes and preparation of reports for the successful implementation of activities in Controlling

OperaOpus™ | ERP

OperaOpus™ ERP provides operational and financial controlling of the company's operations and integrates all its business processes through the following basic functionalities:

BUSINESS ACCOUNTING

- Financial Management:
 - easy management with completely automated formulas for posting
 - preparation and analysis of financial plans
 - reporting and analysis of hundreds of built-in and user-defined reports
- Financial Accounting:
 - fully automated posting to the general ledger of goods and material-commercial operations, accounting and asset production
 - recording and reporting of business events by different dimensions: cost centres, facilities, work orders, investments, contracts...
 - fully supported foreign exchange accounting with automatic calculation of exchange rate differences and revaluation
- Cash Management:
 - payment slips, paid out slips, travel orders
 - automatic posting of these documents into the cash balance
 - records of foreign currency cash balances
 - automatic creation of the JOPPD form of travel orders and other records (welfare payment to employees, the cost of the field allowance, jubilee bonuses, scholarships...)
 - automatic creation of orders for the payment of advances
- E-business:
 - import of copies via e-banking
 - preparation for upload of summary payment orders from incoming invoices and outstanding travel orders in domestic and foreign currency
 - withdrawal of foreign exchange rates from the Internet
 - exchange data with the Internet services of the Tax administration and FINA, Intrastat
- Account Reconciliation:
 - automatic or manual linking of payments and debts
 - getting of all accounts reports for any day in the past or future
 - calculation of interest on the open, closed, or all debts
 - production of the liquid plan
 - module for an automatic gradual defaulter reminding
 - generation of statement on the 14th and 15th
 - making proposals and monitoring compensation
- Registry Book:
 - records of incoming, outgoing and internal documents
 - monitoring of wiring documents by departments and employees
 - ability to link files with an item from the Registry
 - connection to the CRM activities

INVENTORY CONTROL & SALES

- Ordering:
 - automatic calculation of needs and drafting purchase orders in several ways
 - evaluation of suppliers according to the ISO prescribed criteria with user-defined parameters
 - monitoring the status of orders

- records of contracted procurement conditions by suppliers /commodities/commodity groups...
- production of orders according to specifications and in the language of suppliers
- Receipt of goods and materials:
 - order picking for the receipt or input and control through barcode reader with automatic closure orders, tracking of closeness by itemized documents
 - monitoring of warehouses by positions and goods by series and dimensions
 - calculation of the storage cost by the average and the last input method
 - possibility of retroactive corrections (with the appropriate access level) at any time with automatic calculation of storage price and quantity at all sequential transactions
 - input of variable costs per import completion, document or each item
 - reporting on turnovers articles, critical quantities, value and quantitative checks on all entered criteria and arbitrary periods of time
- Sales Management and Distribution:
 - recording commercial terms through tariffs; definition of prices and rebates by each partner for each item or by groups of partners/items, branches, cost centres, regions, producers or a combination of any of the criteria listed in any currency, the possibility of price changes depending on the amount, the definition of free items
 - adjustment and design of documents (offers, orders, invoices, delivery notes...) according to the user's specifications
 - monitoring of the reserved quantities in stock
 - monitoring of open orders, checks deliverability in storage and order provisions
 - alerting on documents with expired validity dates
 - immediate insight into stocks
- Retailing sites:
 - on-line solution, all data are always available in the headquarters and at all retail locations
- OperaOpus™ BAR:
 - specific web applications for Windows Mobile/CE devices with built-in barcode reader
 - automated on-line creation of inventory and other storage of documents over a wireless network or a GSM module

SERVICING

- records of servicing events through complex work orders
- connection of servicing activities with the CRM queries and tasks
- monitoring of repairers' work, reporting about the amount of work and material spent, on duration of servicing...
- currently available history of all transactions per partner, item, serial number...

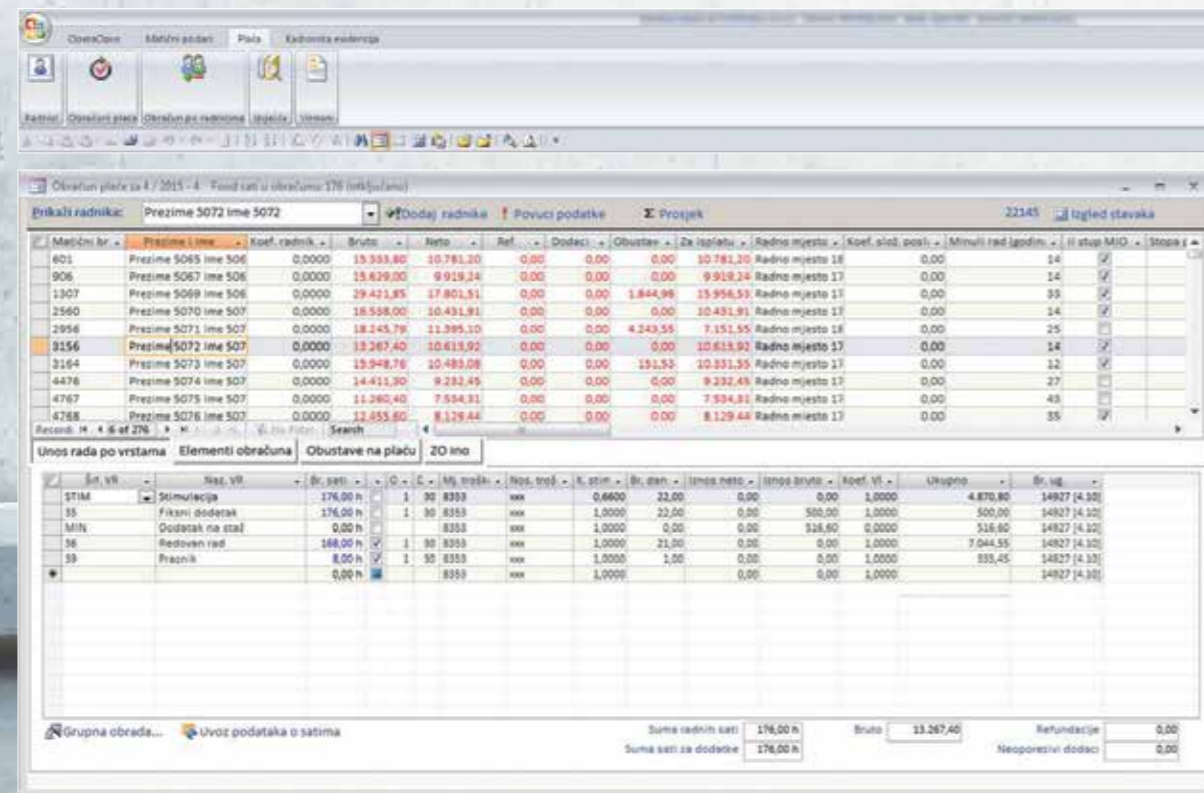
CONSTRUCTION BUSINESS

- records of necessary documentation (information about facilities, interim and final situations, cost estimation lists...)
- revenue and cost situation in each project
- workers' salary calculation based on work done on referred construction sites

MANAGING OF TANGIBLE ASSETS (FIXED ASSETS AND SMALL INVENTORY)

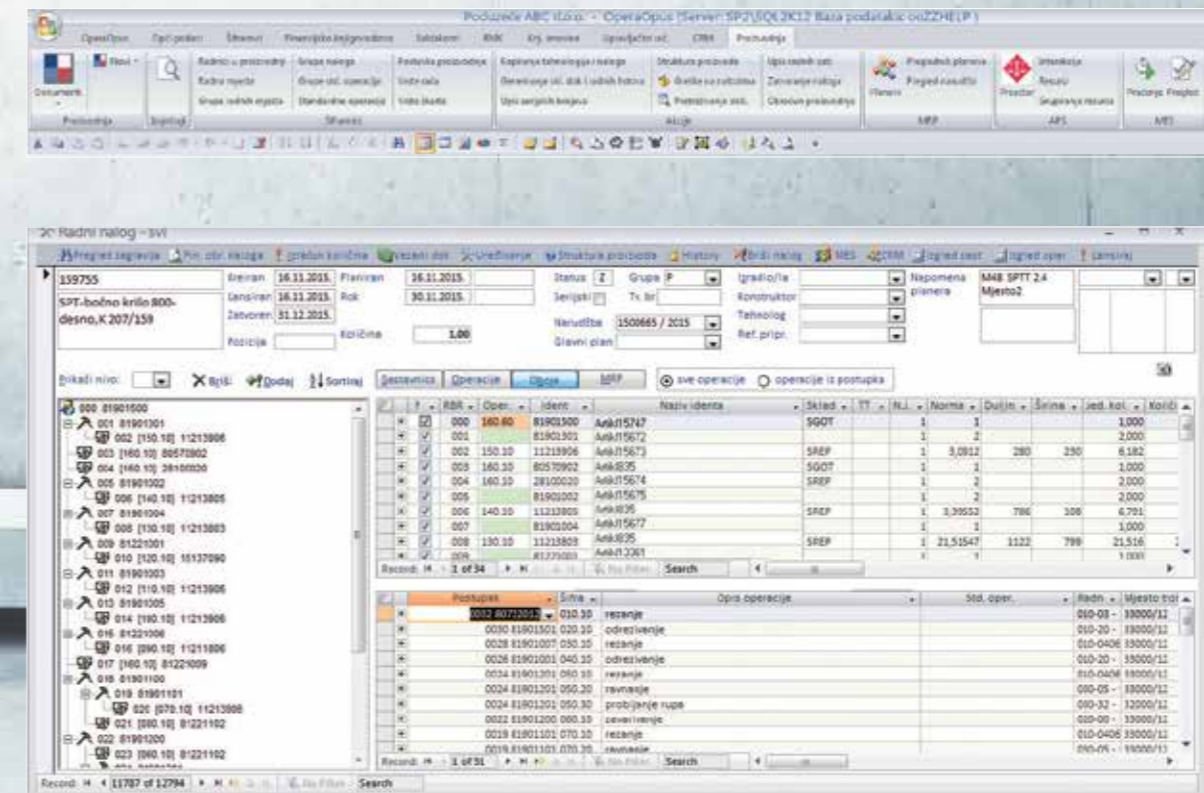
- management of assets at positions/locations
- calculating an arbitrary number of depreciation
- tracking the history of all events
- automated inventory and posting

Our system of salary calculation covers thousands of workers. OperaOpus™ HR offers a number of ways of calculation, the possibility to change the model of calculation and post more advance payments. The calculation of additions and deductions from salary is normally previewed, as well as making all the necessary legal reports. The payments and sending of schedules by employees' accounts towards all banks is executed electronically. All legal monthly reports should be submitted in computerised form. Pay sheets are sent to employees via e-mail.



Entering hours for payroll is carried out by bulk listings or by data transfer from the records of hours. The data can be imported from specialized software for records of working time, with the hours automatically classified as regular, overtime, shift, work on holidays etc. The accounts can be linked to cost holders and the posted accounts are automatically posted to the general ledger by flexibly defined recipes.

This module covers the entire production process including planning, synchronization of sales, purchasing and production activities, calculations and scheduling at the production line. Such a complete system gives the answers about the actual production rates and delivery deadlines for finished products, facilitates records of production documentation and reporting, optimizes inventories and the time of writing, allows rapid "what-if" simulations...



Significant features of this module are the following:

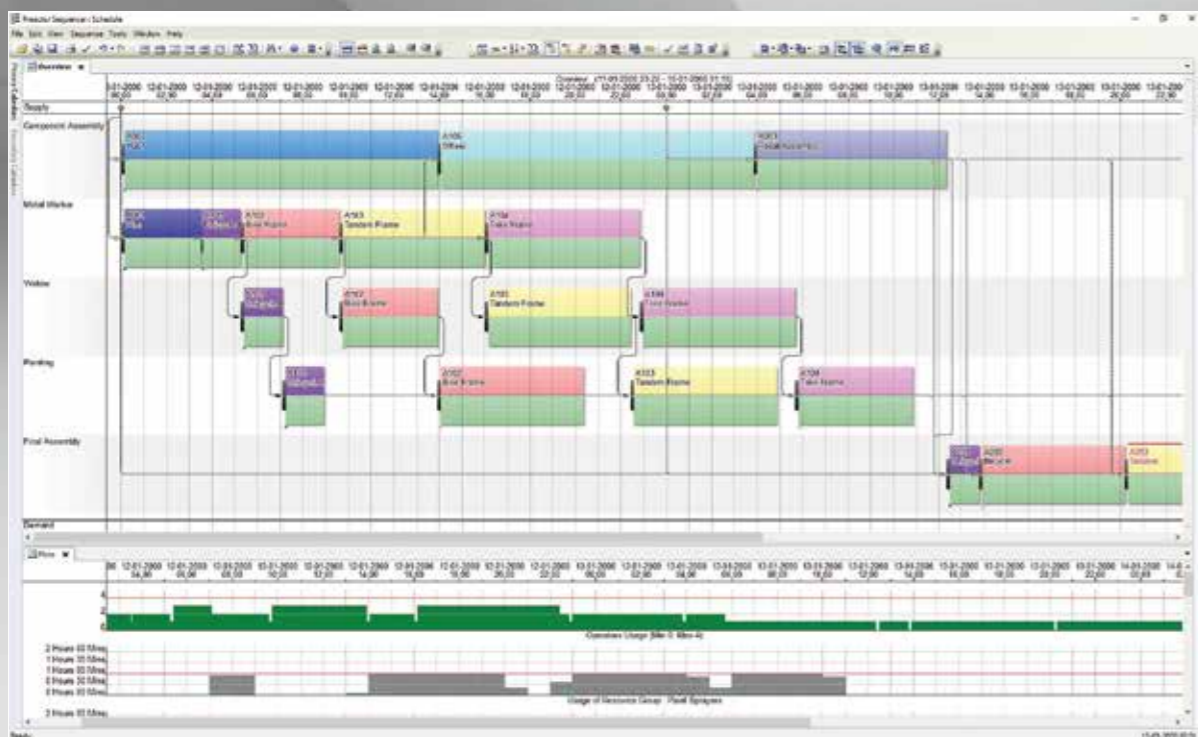
- defining of complex multilayer components with multiple production processes
- defining variants of technologies, the ability to create ad-hoc modifications of components and production processes, the launch of unique orders without technological templates
- automatic launch of production orders based on orders and plans
- reservation of materials and components
- generation of production documents
- traceability insured by tracking series/batches of materials and finished products
- fast MRP algorithm with the possibility of repeated generation of new plans based on an updated status of the facility and the inventory
- close monitoring of the implementation of the operation, the notification on completion, the notification on waste...
- calculation of production by real production prices:
 - complex formulas for gathering and transmission of overheads
 - system of multiple keys for precise allocation of overheads
 - iterative algorithm for the elimination of correctives in stock
 - automation of all stages of calculation
- calculation of the structure of the complex products production costs by cascade notice about the price structure of all installed semi-products
- production scheduling:
 - integration with the Siemens-Preactor system, the world's leading manufacturer of software for production planning and scheduling

· by proper capacity planning and quick reaction to all changes in the production process using this tool, it is possible to achieve the following:

- a significant reduction in inventories of raw materials
- increase in productivity
- on-line scheduling, simulation of “what-if” analysis
- shortening production cycle
- improving relationships with customers through increased speed of delivery and accurate information about the conditions of work orders

After the implementation of all functionalities described, the production company simply gets the right answers to the following questions:

- How much is the production of a single product, and what is the structure of its cost (fixed and variable, direct and indirect costs)?
- What are the earnings?
- When is it possible to promise delivery of the product to a customer and at what price?
- What materials must be purchased for the realization of the plan, how much will it cost and when will it be completed?
- What would happen if we declare an order an emergency, when will it be finished, what other orders will be late because of it, and how much?
- What happens if we get a new machine, introduce overtime or second shift?



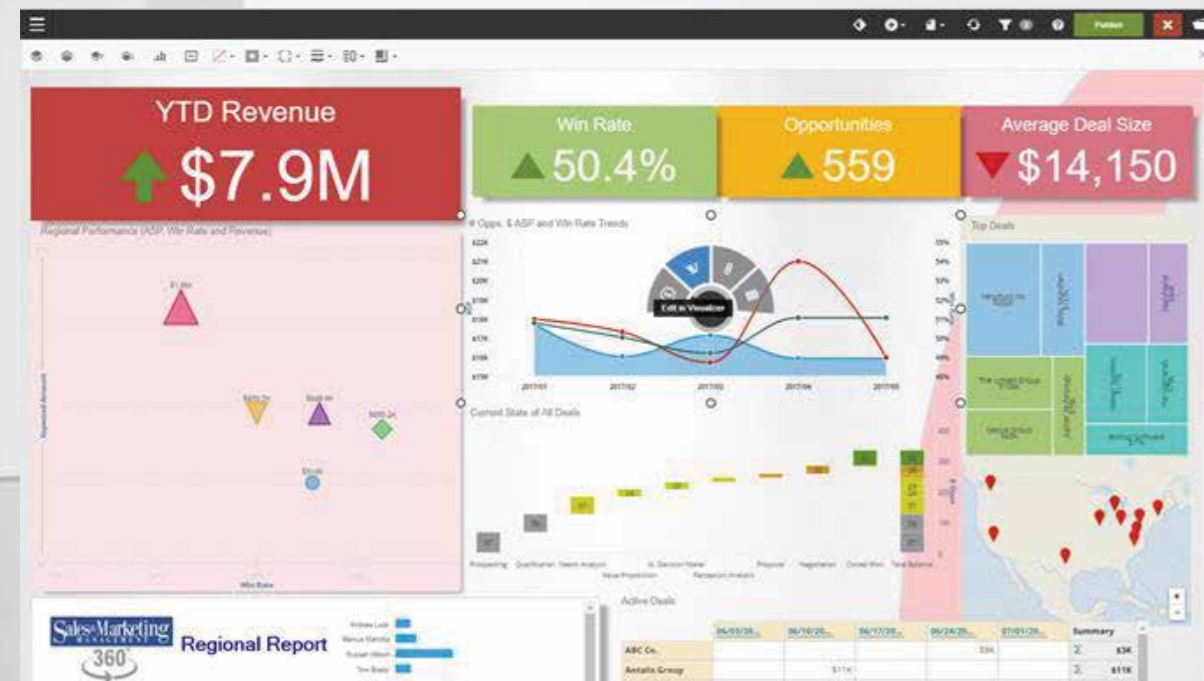
OperaOpus™ | BI

Thanks to the carefully designed database, all reports and analyses are immediately available, always with the freshest data, regardless of their amount.

A powerful report generator fully supports the flexible structure of documents as a source of data, and for each user the system is upgraded with the required number of reports customized to individual needs. Reports are displayed in the pivot, the graphic form or the form for review. Access to them is limited by the security settings, which can be further combined with Excel templates and purpose-designed queries against the database.

For the purposes of management, a special control panel (Dashboard) is designed with an overview of key performance indicators from all modules of the system, with the possibility to review and consolidate data from multiple enterprises group, regardless of country and currency of business as well as the different types of chart of accounts.

Data storage and self-creation control panel tool are implemented by integration with system Infor Birst, one of the world's leading solutions in the field of Business intelligence.



Operacija	Grupa partnera	DV uplate	Broj upl	Datum upl	Uplata dug	Uplata pot	Iznos uplate	DV računa	Broj računa	Datum računa	Račun dug	Račun pot
B1T	B1T/001	11.01.2015	0,00	251,26	251,26	0,00	251,26	0014	0014	20.01.2010	251,26	0,00
B1T	B1T/002	02.02.2015	0,00	199,53	199,53	0,00	199,53	0026	0026	05.02.2010	199,53	0,00
Suma of iznos uplate:					450,79		450,79					
Grupa 12	ZB	28/0010	13.01.2015	0,00	616,58	616,58	616,58			2009	616,58	0,00
	ZB	28/0012	15.01.2015	0,00	883,08	11,41	11,41			2010	5006,85	0,00
	ZB	28/0025	29.01.2015	0,00	2.963,36	2.963,36	2.963,36			2009	2963,36	0,00
	ZB	28/0026	29.01.2015	0,00	3.184,59	3.184,59	3.184,59			2009	3184,59	0,00
	ZB	28/0004	10.02.2015	0,00	2.690,46	2.690,46	2.690,46			2009	2690,46	0,00
	ZB	28/0095	11.02.2015	0,00	3.569,46	3.569,46	3.569,46			2009	3569,46	0,00
	ZB	28/0095	11.02.2015	0,00	3.569,46	178,01	178,01			2009	2695,27	0,00
	ZB	28/0095	11.02.2015	0,00	569,34	569,34	569,34			2009	2695,27	0,00
	ZB	28/0026	11.02.2015	0,00	4.083,56	4.083,56	4.083,56			2010	5006,85	0,00
	ZB	28/0095	11.02.2015	0,00	902,28	902,28	902,28			2010	902,28	0,00
	ZB	28/0096	12.02.2015	0,00	6.290,17	1.887,81	1.887,81			2009	2695,27	0,00
	ZB	28/0096	12.02.2015	0,00	6.290,17	1.898,61	1.898,61			2009	1898,61	0,00
	ZB	28/0096	12.02.2015	0,00	6.290,17	2.933,61	2.933,61			2009	13811,31	0,00
	ZB	28/0096	12.02.2015	0,00	365,00	111,08	111,08			2010	5006,85	0,00
	ZB	28/0099	17.02.2015	0,00	2.270,56	2.270,56	2.270,56			2009	2270,56	0,00
	ZB	28/0099	17.02.2015	0,00	826,73	826,73	826,73			2009	826,73	0,00
	ZB	28/0044	22.02.2015	0,00	419,18	419,18	419,18			2009	419,18	0,00
Suma of iznos uplate:					139.530,91		139.530,91					
Total	Suma of iznos uplate:				139.530,91		139.530,91					
B1T	B1T/001	11.01.2015	0,00	218,05	218,05	0,00	218,05			2010	218,05	0,00
B1T	B1T/001	11.01.2015	0,00	370,11	370,11	0,00	370,11			19.01.2010	370,11	0,00
B1T	B1T/002	02.02.2015	0,00	33,12	33,12	0,00	33,12			02.02.2010	33,12	0,00
B1T	B1T/002	02.02.2015	0,00	66,25	66,25	0,00	66,25			04.02.2010	66,25	0,00

As data source, OperaOpus™ may use the data from all the business years. By transforming the data from the previous systems to the records of the OperaOpus™ system we provide continuity of reporting.

OperaOpus™ | CRM

Customer Relationship Management indicates the direction of the business strategy focused on customer satisfaction, and thus the type of software realized by this strategy. We expand the definition of our system to general monitoring of all activities and responsibilities of the company in marketing, sales, purchase, servicing, maintenance and internal organization with a direct connection to all other OperaOpus™ system modules.

By implementing the CRM modules, the following goals are achieved:

- easier and automated monitoring of relations with partners (marketing, sales, service and support)
- quick access to key information about customers, assortment and competition
- tracking each partner with all the details on the business relationship
- successfully management of business processes followed by the CRM
- timely alerting of the process beginning, maturity and delays
- planning and reviewing own working hours, as well as the time of the other participants in the process
- transparent reporting on planned and achieved results
- continuously informing partners through mass e-mails and newsletters with the ability to define any number of mailing lists
- full integration with documents, codebooks and reports from other OperaOpus™ modules
- using the flexible structure of this module to extend the capabilities of business records: for example, monitoring the competition for job creation and creation of CV databases, records of employees' school education, support to introduction of a quality management system (eg ISO 9001) and similar that require recording and traceability, the ability to define an arbitrary number of additional descriptive fields for all CRM items and reporting on them, the ability to segment the partners according to any criteria available in all parts of the system OperaOpus™ (from the complete built-in reporting system, as well as from all user defined reports) ...
- through all this, to achieve significantly improved relationship with customers, enable rapid response to sudden changes in the market and increase the profitability of the company



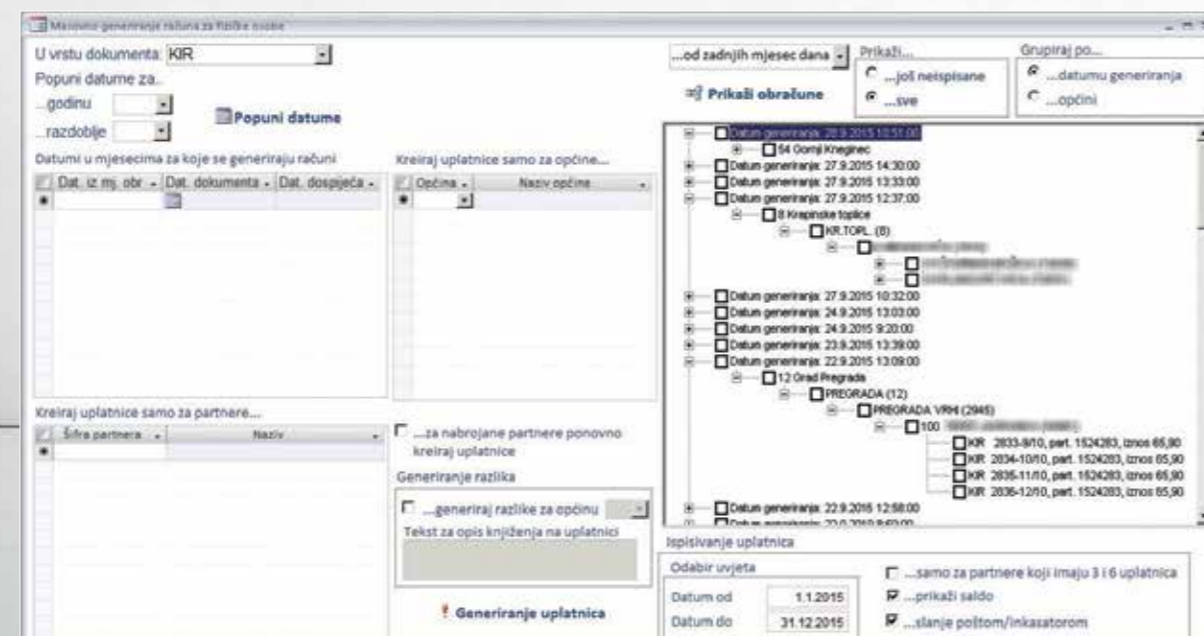
Qd:	Vrijeme	Dan u tj.	Partner	Vrsta	Naziv	Tip
17.02.2016 - tj. 07 - 09:00	Srijeda	Partner99	Zad	5482-Poziv vezano uz nabavu	telefonski poziv	u
17.02.2016 - tj. 07 - 10:00	Srijeda	Partner	Zad	5483-Povoda narudbe - mailom	mail	u
17.02.2016 - tj. 07 - 12:00	Srijeda	Partner253	Zad	5484-Razmatranje ponude - provere	Uredski poslovi	u
17.02.2016 - tj. 07 - 13:00	Srijeda	Partner487	Zad	5485-Povrat robe 113 - naprijediti	Uredski poslovi	u
17.02.2016 - tj. 07 - 14:00	Srijeda	Partner1659	Zad	5486-Autorizacije pletenja - svi nalogi	napomena za stiz ce	u
17.02.2016 - tj. 07 - 15:00	Srijeda	Partner583	Zad	5487-Prispreme za servis	napomena za stiz ce	u
17.02.2016 - tj. 07 - 16:00	Srijeda	Partner999	Zad	5488-Dogovori obilazak	telefonski poziv	u
17.02.2016 - tj. 07 - 17:00	Srijeda					

OperaOpus™ | BILL

This module ("billing") is designed for companies with specific needs such as utility companies, telecommunications service providers and educational institutions. Within the BILL module the capability to work with hundreds of thousands of customers with automatic generation of all necessary documents is supported.

Within the framework of this module the following has been implemented:

- monitoring of contracts with each individual customer
- defining the price list of services/products by groups, partners, regions, cost carriers...
- generation of calculating by geographical origin, groups of users, the type of service/item and other arbitrarily defined criteria
- possibility of generating information related to individual users, settlements, municipalities...
- mass printing of slips
- ability to print user-defined data (number of unpaid bills, the total debt...) on the invoices/bills
- an easy way of processing exceptions and easy regeneration of calculating in accordance with the changed conditions unlimited number of times
- screened group or detailed view of generated/printed documents
- mass calculation and printing of interests and warning letters for non-payment with an automatic assignments of the general ledger
- an automatic data transfer to the general ledger, subsidiary accounts and tax records
- an automatic import of payment via e-banking and automatic connection with responsibilities
- detailed and summary reports on sales and debt/claims (by group/super-group of partners and services/products, by regions, municipalities, towns, streets, monitoring sued and non-performing partners).



OperaOpus™ | PRJ

The projects module is primarily intended for project-oriented companies. The system allows defining the structure of the WBS project methodology that enables by defining levels beside the elements of the projects, the operational monitoring of the project introduces a separation of the project into smaller parts. These elements of the project can be phases or revenue and/or cost-organized units in the projects that want to stand out as key indicators to monitor the performance of the project. The project element is also a level at which planning of the project costs is carried out by type, the invoicing plan, but also the plan of the project execution and the plan of taking over.

We can use the projects track module integrated with the production-monitoring module when planning and monitoring of production work orders become part of the project monitoring, so that the costs of each production work order are at the same time attributed to an element of the project.

An integral part of this module is the automated calculation of projects based on user-defined elements of the work in progress and associated keys to the schedule of the general cost of the project.

Some of significant features of this module are the following:

- defining the project structure in accordance with the WBS methodology
- automatic generation of the WBS element code by the selected dimensions
- classification of WBS elements by the types and kinds
- recording and allocating to WBS element all costs incurred in the course of implementation of the agreed work
- correction of plan and anticipated margins over time
- calculation of the project success in accordance with applicable margins
- calculation and correction of revenues by category (implemented/non-implemented, delayed) or cost by category (recognized, delayed), depending on the MRS11 methodology
- classification of costs in the automated calculation in the categories: materials, labour, fixed and variable
- continuous monitoring of the project success by WBS elements with embedded reports
- link between the project and related contracts
- records of contracts with customers and suppliers/subcontractors
- records of internal agreements between business units
- definition of a contract form depending on the type of contract
- records of cost estimation items in a hierarchical structure
- plan of invoice per contract



OperaOpus™ | WS

Projekt: ...

Struktura Podaci o ugovoru Ostalo

Naziv: ...

Tip: Ugovoreni projekti Ugovor: 300012

KN - za knjigu nositelj Razdoblje: Prenesi realizaciju

Id	Numeracija	Nositelj	Naziv nositelja	Referentni nositelj	Adrijan	Vista	Mjesto točka
300012		300012	Struktura: 300012			RN - Redovni nositelj	
307600060	* 0.1	307600060	Struktura: 1			RN - Redovni nositelj	
307034364	* 0.1.1	307034364	Struktura: 1			RN - Redovni nositelj	
307038180	* 0.1.1.01	307038180	Struktura: 1			PO - Prijava odstupanja	
307600260	* 0.1.1.20	307600260	Struktura: 1			RN - Redovni nositelj	
307600460	* 0.1.2	307600460	Struktura: 1			RN - Redovni nositelj	
307037001	* 0.1.3.1	307037001	Struktura: 1			PO - Prijava odstupanja	
307600560	* 0.1.4	307600560	Struktura: 1			RN - Redovni nositelj	
307600760	* 0.1.5	307600760	Struktura: 1			RN - Redovni nositelj	
307601160	* 0.1.6	307601160	Struktura: 1			RN - Redovni nositelj	
307601260	* 0.1.8	307601260	Struktura: 1			RN - Redovni nositelj	
307601360	* 0.1.9	307601360	Struktura: 1			RN - Redovni nositelj	
307601860	* 0.1.10	307601860	Struktura: 1			RN - Redovni nositelj	

Verzija plana: Napravi verziju Briši verziju Odabrana stavka: 0: Zakućac (300012)

Prhodi: Prenesi plan fakturiranja prema kupcu (prihodi) Filtar: SVE

Tip	Količina	JML	Cijena	Iznos	Suma podstavka	Napom.
P: Nevaljani	1.00		0.00	0.00	1.695.000,00	
Razdoblje	Iznos	Valuta	Tečaj	Dokument	Napomena	Pr.
2016-01	125.000,00 HRK	1,00				Plus, 1
2016-02	1.560.000,00 HRK	1,00				

Rashodi: Prenesi plan fakturiranja od dobavljača (troškovi)

Tip	Količina	JML	Cijena	Iznos	Suma podstavka	Napom.
NT D: Fikni	1.00		0.00	0.00	11.000,00	
Razdoblje	Iznos	Valuta	Tečaj	Dobavljač	Dokument	Napom.
2016-01	5.000,00 HRK	1,00			HEP PROCVODN	
2016-02	6.000,00 HRK	1,00			SIEMENS	
NT D: Materijal	1.00		0.00	0.00	2.727.200,00	
Razdoblje	Iznos	Valuta	Tečaj	Dobavljač	Dokument	Napom.
2016-01	150.000,00 EUR	7,60			SIEMENS	
2016-02	296.000,00 USD	6,20			ABB	

- automatic generation of bills from the plan
- annexation of agreements
- versioning of contracts
- tying all documents of the system on contract
- tying CRM activities on contract
- records of consortium partners and nominated subcontractors (with the definition of subcontract amounts in the accounts that are specifically recorded and monitored in Finance and Accounts)
- tying external documents to a contract (doc, xls, pdf...)
- records of business unit shares in the contract with the possibility of automatic distribution of income on the account according to the defined proportions
- records of retention with automatic correction of the expected maturity in case of change of the project date.

Ugovor - domaći: ...

History

Osnovni podaci Plan i realizacija Ugovorne stavke Aneksi Vezani dokumenti Osobe i Milestone-ovi Akcije CRM Strani nazivi Napomene Partneri Ostalo

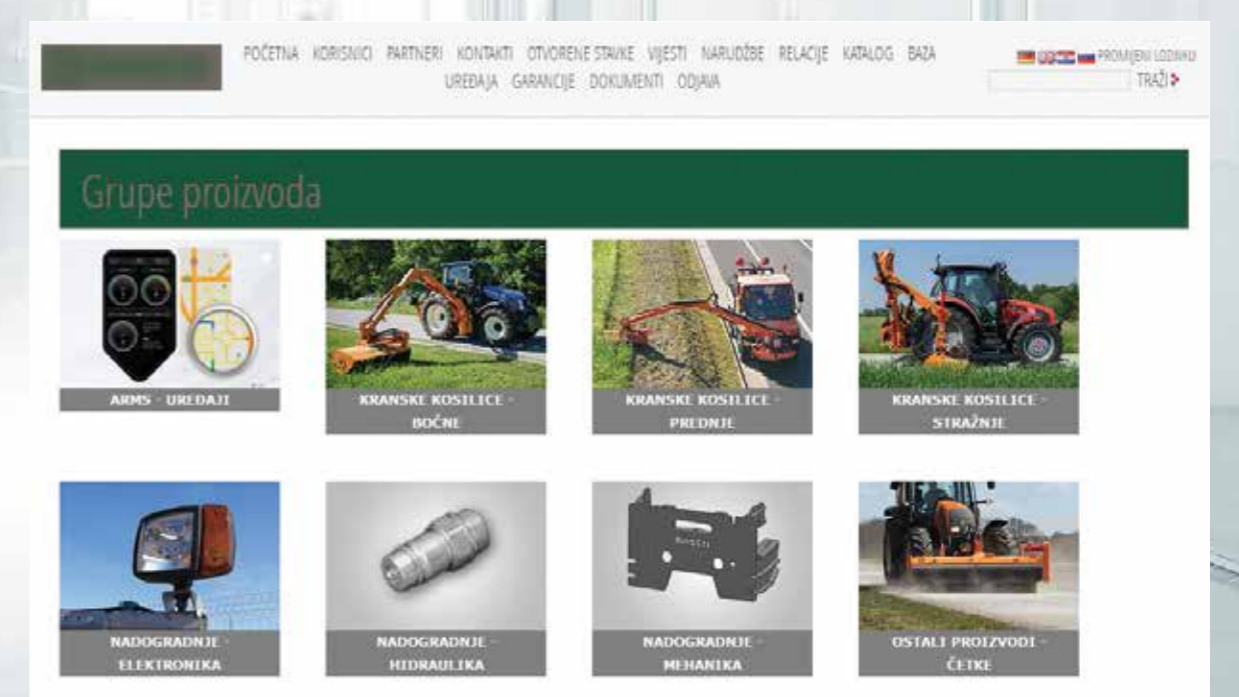
Ugovorne stavke: Prikazi nivo: 3

Težinski opreke	Numeracija	Naziv	Broj djela	Ukupni iznos (sum. bez. val.)	Ukupni iznos (sum. bez. val.)	Ukupni iznos (sum. bez. val.)
OPREMA: ...	1	...	2	2.717.200,00	2.717.200,00	2.717.200,00
OPREMA: ...	1.1	...	540	180,00	540.180,00	540.180,00
OPREMA: ...	1.1.1	...	304	370,00	304.370,00	304.370,00
OPREMA: ...	1.1.2	...	91	59,00	91.59,00	91.59,00
OPREMA: ...	1.1.3	...	1	1.000,00	1.000,00	1.000,00
OPREMA: ...	1.1.4	...	2	2.000,00	2.000,00	2.000,00
OPREMA: ...	1.1.5	...	45	45,00	45,00	45,00
OPREMA: ...	1.1.6	...	31	31,00	31,00	31,00
OPREMA: ...	1.1.7	...	4	4,00	4,00	4,00
OPREMA: ...	1.1.8	...	64	64,00	64,00	64,00
OPREMA: ...	1.2	...	1.560.000,00	1.560.000,00	1.560.000,00	1.560.000,00
OPREMA: ...	1.2.1	...	20	20,00	20,00	20,00
OPREMA: ...	1.2.2	...	310	310,00	310,00	310,00
OPREMA: ...	1.2.3	...	40	40,00	40,00	40,00
OPREMA: ...	1.2.4	...	160	160,00	160,00	160,00
OPREMA: ...	1.2.5	...	28	28,00	28,00	28,00
OPREMA: ...	1.2.6	...	160.000,00	160.000,00	160.000,00	160.000,00

Generiranje dok. Izgled stavka Generiraj Odabrana stavka ugovora: HE GOLUBIĆ

Vista dokumenta	Planiрани datum	Iznos	Količina	Tečaj	Milestone	Dokument
41	20.1.2015	6.075.994,00	0,000000	0,00%	Prvi milestone	41: 8340-41-15-0008
41	30.4.2015	100.000,00	0,000000	0,00%		
41						

- The WS (WebShop) module significantly expands the definition of a standard web store. All processes are managed directly by the ERP system:
- the user controls the information that he wants to show on the Internet shop / portal
 - the user has the ability to give access only to registered customers
 - information about the items, groups, translations, price lists, promotions, stock, images and documents are transmitted directly from the ERP system to the web shop; items can be described with an arbitrary number of characteristics that enables search in your web shop
 - customers can list statistics about the most common purchases with a selected product, calculated from all transactions system or user controlled; display of replacement items
 - the status of outstanding balances, status (deliverance and payment done) and the details of all customer's documents (orders, invoices...) as well as reports on purchases within a certain period (the items, groups, producers...) can be displayed to customers
 - an advanced version also supports the process of configuring complex products, exchange of documents with customers (inquiry, offer, order, delivery, invoice, with the delivery status and notice on delivery deadlines), tracking the history of the device, service and warranties
 - inquiries /orders from the web shop come directly in the ERP; communication with customer is provided by integrating with CRM tasks of the central system
 - secure online credit card payment is implemented
 - multilingualism is implemented at all levels of data and interfaces.



OperaOpus™ | EXT

The OperaOpus™ system is open to the following external systems and services:

- e-banking – automatic posting of copies; preparation of summary payment orders from incoming invoices and payroll
- e-tax administration - submission of all legal forms:
- VAT, VAT-S, PA, PPO (Controlling of Domestic Tax Liability Transfer form), JOPPD (Gross Receipts Overview form), Intrastat, Control books
- CNB – automatic download of exchange rates
- EDI – system for the electronic exchange of documents
- e-invoice – sending outgoing bills in computerized form; receiving incoming invoices and automatic posting in the system.

Broj dokumenta	Datum dok.	Naziv partnera	Valuta	Status	Status datum	Vrsta ispisa
0636-1-1	14.11.2016		HRK	Dostavljeno	13.12.2016 13:05:38	IRDT_Fiscal_2009_bec_potpisa
0637-1-1	15.11.2016		HRK	Dostavljeno	22.12.2016 7:51:00	IRDT_Fiscal_2009_bec_potpisa
0638-1-1	17.11.2016		HRK	Dostavljeno	22.12.2016 8:11:55	IRDT_Fiscal_2009_bec_potpisa
0640-1-1	25.11.2016		HRK	Dostavljeno	22.12.2016 8:57:37	IRDT_Fiscal_2009_bec_potpisa
0643-1-1	30.11.2016		HRK	Dostavljeno	22.12.2016 17:20:28	IRDT_Fiscal_2009_bec_potpisa
0648-1-1	30.11.2016		HRK	Dostavljeno	22.12.2016 10:28:45	IRDT_Fiscal_2009_bec_potpisa
0649-1-1	30.11.2016		HRK	Dostavljeno	22.12.2016 9:21:35	IRDT_Fiscal_2009_bec_potpisa
0650-1-1	30.11.2016		HRK	Dostavljeno	22.12.2016 9:28:38	IRDT_Fiscal_2009_bec_potpisa
0651-1-1	30.11.2016		HRK	Dostavljeno	22.12.2016 9:13:09	IRDT_Fiscal_2009_bec_potpisa
0653-1-1	30.11.2016		HRK	Dostavljeno	22.12.2016 7:05:58	IRDT_Fiscal_2009_bec_potpisa
0655-1-1	30.11.2016		HRK	Dostavljeno	22.12.2016 9:22:58	IRDT_Fiscal_2009_bec_potpisa
0656-1-1	30.11.2016		HRK	Dostavljeno	22.12.2016 8:50:07	IRDT_Fiscal_2009_bec_potpisa
0657-1-1	30.11.2016		HRK	Dostavljeno	22.12.2016 7:56:22	IRDT_Fiscal_2009_bec_potpisa
0658-1-1	30.11.2016		HRK	Dostavljeno	22.12.2016 8:14:22	IRDT_Fiscal_2009_bec_potpisa
0659-1-1	30.11.2016		HRK	Dostavljeno	22.12.2016 7:34:24	IRDT_Fiscal_2009_bec_potpisa
0660-1-1	30.11.2016		HRK	Dostavljeno	22.12.2016 8:59:37	IRDT_Fiscal_2009_bec_potpisa
0661-1-1	30.11.2016		HRK	Dostavljeno	22.12.2016 9:08:47	IRDT_Fiscal_2009_bec_potpisa
0663-1-1	30.11.2016		HRK	Dostavljeno	22.12.2016 8:40:21	IRDT_Fiscal_2009_bec_potpisa
0664-1-1	30.11.2016		HRK	Dostavljeno	22.12.2016 8:11:08	IRDT_Fiscal_2009_bec_potpisa
0679-1-1	30.11.2016		HRK	Poslano	18.12.2016 9:12:33	IRDT_Fiscal_2009_bec_potpisa
0679-1-1	30.11.2016		HRK	Dostavljeno	22.12.2016 7:22:27	IRDT_Fiscal_2009_bec_potpisa

• integration with external specialized systems of users:

- machines in the production
- engraving devices for nameplates
- corporate managerial systems for advanced data consolidation
- import of price lists from suppliers
- data/documents export in the prescribed formats to the partners systems
- creation of dedicated interfaces by special customer requirements.

OperaOpus™ | WRK

The OperaOpus™ WRK provides the ability to define different processes of documents approval in the system. It is possible to define an arbitrary number of steps of approval of all systems documents (financial / commodity-material-commercial / production / contracts / travel orders). Unapproved documents cannot move to the next stage of processing (recording, printing, sending to partner, copying ...). The process flow can look differently depending on the characteristics of the document to be approved (i.e. additional people involved in approving documents above a certain amount, or different types of work). The module has the following important features:

- approval is defined by the operators and/or groups of operators, belonging to the place and cost carrier, according to the company hierarchy
- every step of approval can have an arbitrary number of operators who must approve it and a prescribed deadline by which the approval must be carried out
- operators are informed of the new requirements (or the next steps) through the system and/or e-mail / SMS mail (with the attached print document)
- communication by e-mail is defined using templates in which data can be added from a document for approval; it is possible to define to have people from arbitrarily defined mailing lists informed with any approval
- approval can be defined in such a way to result in an automatic generation of the sequence document in the process or subsequent posting
- the approval process can be totally flexible as well (operators decide ad hoc on the next step of approval)
- approval may at any stage be canceled or diverted.

Request for approval review

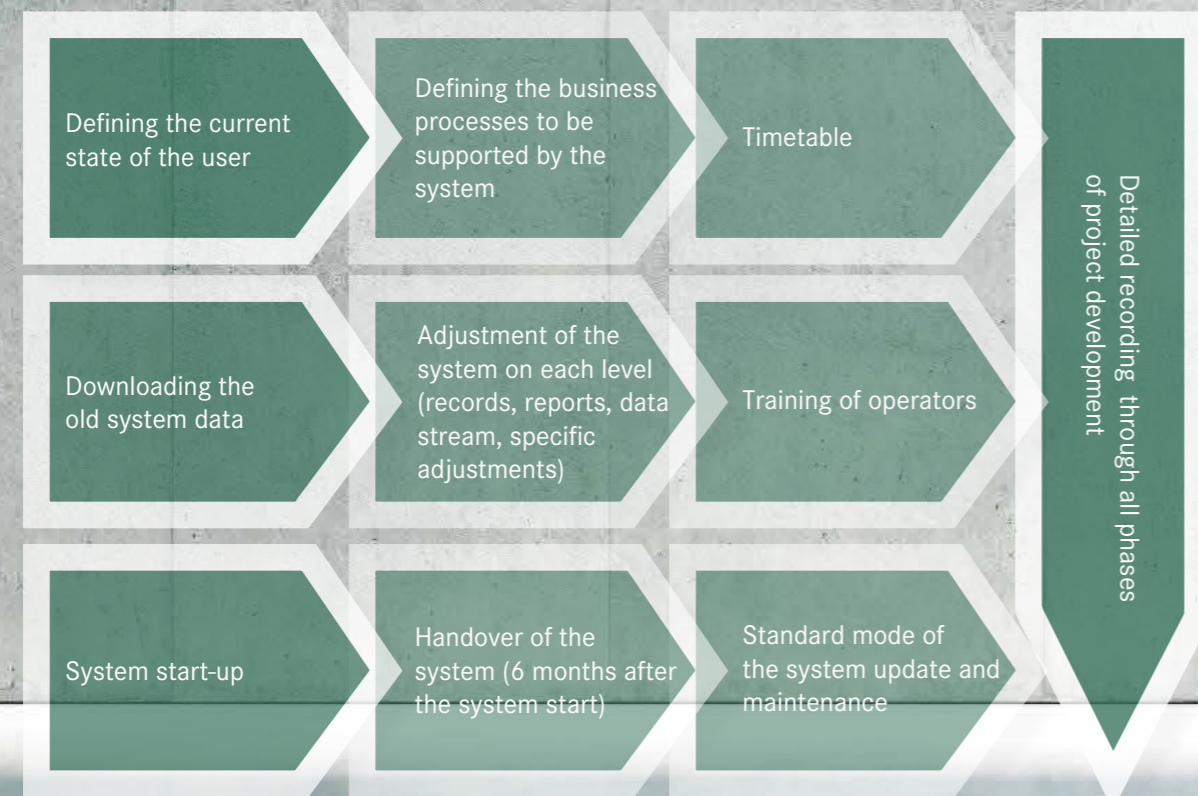
Operator	Role	Status	Approval Date
Operator 1	Operator	Approved	20.12.2016
Operator 2	Operator	Approved	20.12.2016
Operator 3	Operator	Approved	20.12.2016
Operator 4	Operator	Approved	20.12.2016
Operator 5	Operator	Approved	20.12.2016
Operator 6	Operator	Approved	20.12.2016
Operator 7	Operator	Approved	20.12.2016
Operator 8	Operator	Approved	20.12.2016
Operator 9	Operator	Approved	20.12.2016
Operator 10	Operator	Approved	20.12.2016

Implementation

The implementation of the OperaOpus™ system is a complex process performed by our team of highly qualified professionals in the business information field. The implementation is monitored by consultants with at least ten years of experience in dozens of significant projects.

We approach each implementation as to a special project and tailor the system to the smallest, user-customized details. Together we create all the documents for monitoring operations, determine their functional behaviour in the system, direct the flow of documents and responsibilities, prepare the required number of reports from all business segments, edit and normalize the existing data, train operators to work with the system. We help with the re-engineering of business processes and designing of data structure, and we prepare everything necessary for controlling. We believe that this individualised approach is the only way to completely satisfy our customers.

During the implementation we conduct the following activities:



· Constant presence and support to any change in business processes of the user

· Periodic status record and improvement proposal

Depending on the complexity and urgency of the implementation and the agreement with the user, some of these stages can be carried out in parallel. We are able to run the system at any time of year, with the transfer of all data from the existing system until that point.

OperaOpus™- IT System In Service Of Controlling

The information system as support to controlling and the controlling supported by business information system is the backbone of a successful enterprise management.

An information-oriented and controlling-customized concept is carried out by establishing and implementing accounting records in the system and by implementing of planning and records of sales and financial activities through the system. Collecting information and forming the information in a result, controlling creates guidelines for financial management and a basis for making strategic decisions of middle and senior management.

For the purposes of controlling the system allows:

- records of partial plans (operational and financial plan of sales, production, procurement and investment)
- short-term and long-term planning
- adding the control elements in the documents of the system
- adding the control documents in the system
- integration of the budget, controlling strategies and goals with operational activities
- analysis of business activities through the establishment of the controller reporting system
- timely informing through integration of the system with the CRM system and the ability to publish controlling reports on the control panel (Dashboard)
- structuring costs by the areas of responsibility

Permanent Guarantee: Update and Maintenance

We can offer an arrangement of permanent guarantee for our product as through annual contracts on the system updating and maintenance. By its updating we understand and cover all legislative changes in business, technology alignments and new functionalities of the system. Within the frame of an additional maintenance we offer packages of work hours under favorable conditions, that users can use to redefine the procedures necessary to monitor the newly established business processes, create additional customized reports, new operators in the system, for consulting services...

In order to provide our customers with a fully transparent cost control, all requests and interventions shall be recorded and sent to the users, in the form of monthly reports or on demand. At any moment, we are able to provide information on the status of each application, as well as the details of all work done in any period.

We take the responsibility to respond, within 24 hours, to every inquiry, but in practice, the response is in most cases immediate. We receive and resolve inquiries by all available communication channels.

Licensing, business conditions, the formula for calculating the update and maintenance are transparently reflected on the public price list of licenses and services of our company.



References:

- Agmar Ltd., Zagreb
- AlphaChrom Ltd., Zagreb
- A-PELET Ltd., Oprisavci
- Apiflora Ltd., Sarajevo, Bosnia and Herzegovina
- Apipharma Ltd., Zagreb
- Apolonia Ltd., Labin
- APP Inc., Požega
- Aquaterm Ltd., Karlovac
- Asolutic Ltd., Zagreb
- Astra International Inc., Zagreb
- Bakrotisak Inc., Garešnica
- Benko-farma Ltd., Dvor na Uni
- BIDD Samobor Ltd., Samobor
- Bio-Već Ltd., Daruvar
- Cemal BH Ltd., Orašje, Bosnia and Herzegovina
- Centar za otpad Ltd., Zagreb
- CompING Ltd., Zagreb
- Compra Ltd., Karlovac
- CRO-BEL Ltd. Oprisavci
- Decospan Ltd., Oprisavci
- Decospan Mato Furnir Ltd., Oprisavci
- Domus Ltd., Vukovar
- Eko-Flor Plus Ltd., Oroslavje
- Englmayer Ltd., Zagreb
- Esplanade Oleander Ltd., Zagreb
- Euroinspekt Croatiakontrola Ltd., Zagreb
- Ferrostil Mont Ltd., Zagreb
- Filli Stahl Ltd. Hrušćica - Ivanja Reka
- Geb-vet Ltd., Gornja Stubica
- Grafik.NET Ltd., Zagreb
- Hidraulika Kurelja Ltd., Donja Stubica
- HON-ING.Ltd., Vrankovec
- Horvat Ltd., Zagreb
- Imobilia Tehno Ltd., Zagreb
- International Ltd., Ljubuški, Bosnia and Herzegovina
- Jedinstvo Krapina Ltd., Mihaljekov Jarek
- KFK Design Ltd., Zagreb
- KFK Ltd., Zagreb
- Končar - Switchgear Inc., Zagreb
- Končar - Electrical Industry Inc., Zagreb
- Končar - Generators and Motors Inc., Zagreb
- Končar - Power Plant and Electric Traction Engineering Inc., Zagreb
- Končar - MES Inc., Zagreb
- Končar - Engineering Co. for Plant Installation & Commissioning Inc., Zagreb
- Končar - Renewable sources Ltd., Zagreb
- Kontejner Ltd., Krapina
- Lager Ltd., Podgorica, Montenegro
- Lager Ltd., Posušje, Bosnia and Herzegovina
- Lager Bašić Ltd., Donji Stupnik
- Limarija Sebastijan Ltd., Bestovje
- Limovi i konstrukcije Ltd., Krapina
- Ljevaonica-Krapina Ltd., Krapina
- M.I.Hršak Ltd., Krapina
- Medikadent Ltd., Zagreb
- MB Frigo Ltd., Beograd, Serbia
- MB Frigo, klima i hlađenje, Ltd., Zagreb
- MB Frigo Ltd., Ljubljana, Slovenia
- MB Frigo Ltd., Sarajevo, Bosnia and Herzegovina
- MB Frigo Grupa Ltd., Zagreb
- Medial Ltd., Zagreb
- Mlakar viličari Ltd., Bestovje
- MMS Tehnika Ltd., Sesvete
- Mondipro Ltd., Sveta Nedelja
- Montaža-Krapina Ltd., Krapina
- MULL-TRANS Ltd., Mokrice
- Ozon Sport Ltd., Zagreb
- Panturist Inc., Osijek
- Pastor TVA Inc., Zagreb
- Paterna Ltd., Pleternica
- Peći i keramika Ltd., Krapina
- Perfa Ltd., Donja Stubica
- Perfa-bio Ltd., Donja Stubica
- Perfex - peradarstvo Ltd., Donja Stubica
- Poliklinika Cosmogamma jedan, Zagreb
- Primat logistika Ltd., Zagreb
- Primat-RD Ltd., Zagreb
- Rasco Ltd., Kalinovac
- RASCO Holder Ltd., Kalinovac
- Rasco-TAMP Ltd., Senta, Serbia
- Reton Ltd., Mostar, Bosnia and Herzegovina
- Robotic Ltd., Zagreb
- Roletarstvo Dodić d.o.o, Zagreb
- Rotoplast Ltd., Kerestinec
- Sanitaria dental Ltd., Podgorica, Montenegro
- Sanitaria Sarajevo Ltd., Sarajevo, Bosnia and Herzegovina
- Sanitaria dental Ltd., Zagreb
- SCL logistika Ltd., Zagreb
- Securitas Hrvatska Ltd., Zagreb
- Semmelrock Stein+Design Ltd., Ogulin
- Sinus Ltd., Vinkovci
- Skladišna logistika Ltd., Zagreb
- Slavonija Bus Ltd., Velika Kopanica
- Strma Ltd. Zagreb
- T.P.M. Ltd., Pojatno
- T.P.M.-Vrlika Ltd., Vrlika
- Tehnomobil Securitas Ltd., Zagreb
- TEM Mandeks Ltd., Široki Brijeg, Bosnia and Herzegovina
- Terex CO Ltd., Beograd, Serbia
- Termostroji Ltd., Zagreb
- Tondach HRVATSKA Inc., Bedekovčina
- TOZ Penkala Inc., Zagreb
- TOZ Penkala Proizvodnja i usluge Ltd., Zagreb
- Tromont Ltd., Split
- Vamac M.V. Ltd., Zagreb
- Visina DIR Ltd., Bestovje
- Vodoprivreda - Zagorje Ltd., Kupljenovo
- Wienerberger-Ilovac Inc. Karlovac
- Zagorje betoni Ltd., Zabok
- Zagorka Ltd., Bedekovčina

SVAM PLUS D.O.O.
FRANCESCA TENCHINIJA 2A
10000 ZAGREB, CROATIA
TEL: +385 1 379 00 11
FAX: +385 1 379 05 06
INFO@SVAMPLUS.HR
WWW.SVAMPLUS.HR

